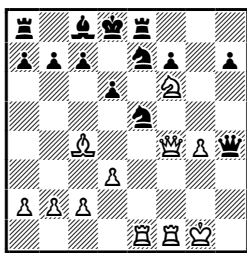
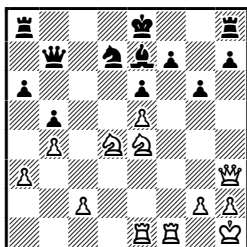


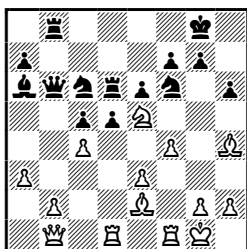
Czigorin – Dawydow, Petersburg 1874



Bolesławski – Steiner, Sztokholm 1948



Simagin – Gołowko, Moskwa 1950



Czigorin – Dawydow, Petersburg 1874

1. ♖e5 de5 2. ♜e5 ♘g4 3. ♞d4+ ♙c8 4. ♙e6+!
- (A) 4... ♚b8 5. ♘d7+ ♚c8 6. ♘c5+ ♚b8 7. ♘a6+ ba6
8. ♞b4x.
- (B) 4... fe6 5. ♞d7+ ♚b8 6. ♞e8+ ♘c8 7. ♘d7x.

Bolesławski – Steiner, Sztokholm 1948

1. ♖f7 (A) 1... ♚f7 2. ♜e6+ ♚f8 3. ♖f1+ ♚e8 4. ♘d6+ ♚d8 5. ♘b7+.
- (B) 1... ♞d5 2. ♖e7+ ♚e7 3. ♞h4+ ♚f7 4. ♘d6+ ♚g7 5. ♞e7+ ♚h6
6. ♖e3.

Simagin – Gołowko, Moskwa 1950

1. ♙f6 gf6 2. ♘f7! ♚f7 3. ♞h7+ ♚e8 4. f5! d4
5. fe6 ♖e6 6. ♙g4 ♖d6 7. ed4 ♙c4 8. ♖de1+ ♚d8
9. ♖f6 ♖f6 10. ♞d7x.

Goglidze – Kasparian, Tbilisi 1937

1. ♘g4! fg4 2. ♞g8+ ♞g7 3. f5+ ♚f6 4. ♞e8! h5
5. ♞e7+ ♚f5 6. ♞d6 ♘d6 7. ♖g7 ♚f6 8. ♞d6! ♘d6
7. ♖g7 ♚f6 8. ♖h7 ♘f5 9. ♖c7.

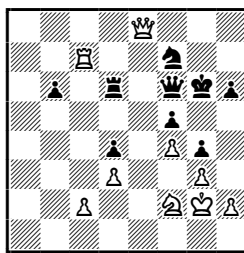
Sokolski – Kotow, Moskwa 1949

1. ♘h6! ♙h6 2. ♖h8+! ♚h8 3. ♞h6+
- (A) 3... ♚g8 4. ♖b8+ ♚f7 5. ♞h7x.
- (B) 3... ♖h7 4. ♞f6+ ♖g7 5. ♖b7!

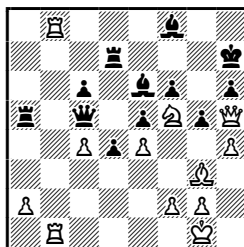
Rabinowicz – Botwinnik, Moskwa 1927

- 1... ♖f4! 2. gf4 ♞g3!
- (A) 3. cd5 ♙c5 4. ♘e4 ♙h3+ 5. ♖h3 ♞g1x.
- (B) 3. ♘e4 de4 4. ♖d7 ♙c5! 5. e3 ♞f3+ 6. ♚f2 ♞h1+
7. ♚e2 ♞h3 8. f5 ♞g4+ 9. ♚d2 ♖f8 10. e6 ♞f5!

Goglidze – Kasparian, Tbilisi 1937



Sokolski – Kotow, Moskwa 1949



Rabinowicz – Botwinnik, Moskwa 1927

