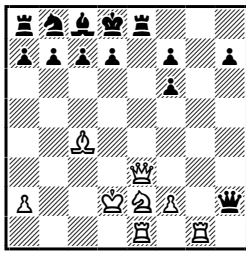
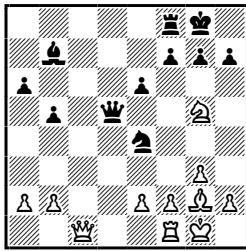


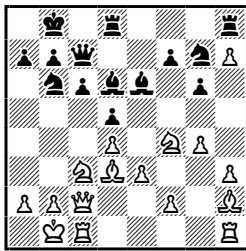
**Perlassa** – Brikker, Como 1907



Monostori – **Florian**, Budapeszt 1950



**Reshevski** – Gligorić, Nowy Jork 1952



**Perlassa** – Brikker, Como 1907

Monostori – **Florian**, Budapeszt 1950

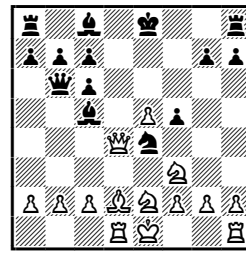
**Reshevski** – Gligorić, Nowy Jork 1952

**Vuković** – Deutsch, Zagrzeb 1920

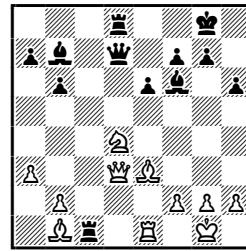
**Tylor** – Winter, Hastings 1933

**Kluger** – **Sandor**, Budapeszt 1958

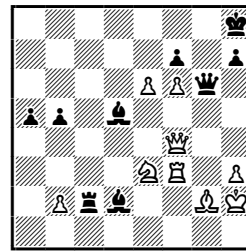
**Vuković** – Deutsch, Zagrzeb 1920



**Tylor** – Winter, Hastings 1933



**Kluger** – **Sandor**, Budapeszt 1958



1. ♔e8+! ♚e8 2. ♜d4+  
 (A) 2... ♔e5 3. ♞g8+ ♚e7 4. ♜f5x.  
 (B) 2... ♚f8 3. ♞e8+! ♚e8 4. ♞g8+ ♚e7 5. ♜f5x.

- 1... ♜g3!  
 (A) 2. ♜d5 ♜e2+ 3. ♚h1 ♜d5+ 4. f3 ♜c1.  
 (B) 1. e4 ♜e2+ 3. ♚h1 ♔e5 4. ♔d2 ♜f4.

1. ♜b5!  
 (A) 1... cb5 2. ♔c7+ ♜c7 3. ♞c7 ♚c7 4. ♜e6+ ♚d7  
 5. ♜d8 ♞d8 6. ♜b5+ ♚e6 7. ♜c7.  
 (B) 1... ♔e7 2. ♜d6 ♞d6 3. ♜e6.

1. ♔d8+  
 (A) 1... ♚d8 2. ♜g5+ ♚e8 3. ♞d8+ ♚f7 4. e6+ ♚e6  
 5. ♜f4+ ♚f7 6. ♜e5x.  
 (B) 1... ♚f7 2. e6+  
 (B1) 2... ♚e6 3. ♜f4+ ♚f7 4. ♜e5x.  
 (B2) 2... ♚g6 3. ♜f4+ ♚h6 4. ♔h4x.

1. ♔h7+ ♚f8 2. ♔h8+ ♚e7 3. ♜f5+ ef5 4. ♜c5x.  
 1... ♔g2+!  
 (A) 2. ♜g2 ♜f4+ 3. ♞f4 ♞g2+ 4. ♚h1 ♞f2+.  
 (B) 2. ♚g2 ♜e3+ 3. ♚g3 ♜f4+.