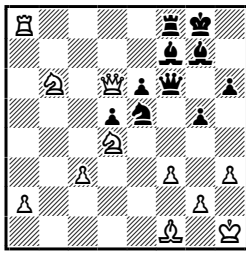
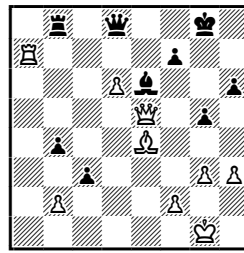


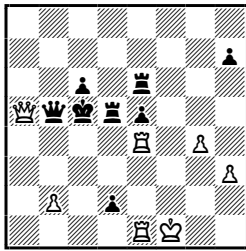
Bellin – Nielsen, Kopenhaga 1989



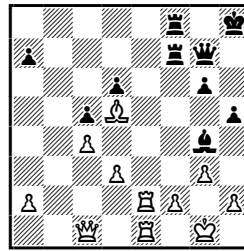
Kasparow – Browne, Banja Luka 1979



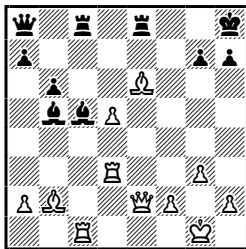
Buscher – Müller, Bazylea 1959



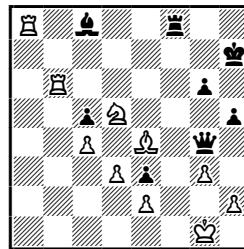
Ljubojević – Meulders, Bruksela 1987



Damljanović – Kristiansen, Nowy Sad 1990



McNab – Becker, Berlin 1991



Bellin – Nielsen, Kopenhaga 1989

1. ♖d5 ed5 2. ♜f8+ ♝h7 3. ♞f6 ♜f6 4. a4.

Buscher – Müller, Bazylea 1959

1. ♜c4+ ♝c4 2. ♞c3x.

Damljanović – Kristiansen, Nowy Sad 1990

1. ♜g7+ ♝g7 2. ♞e5+ ♜g6 3. ♞f6+ ♝h5 4. g4x.

Kasparow – Browne, Banja Luka 1979

1. ♜h7+ ♝h7 2. ♞e6.

Ljubojević – Meulders, Bruksela 1987

1. ♜e7

McNab – Becker, Berlin 1991

1. ♜g6 ♞e2 2. ♜a7+ ♝h8 3. ♜h6+ ♝g8
4. ♜g7+ ♝g7 5. ♜h7+.