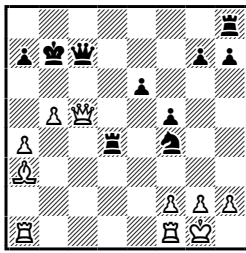
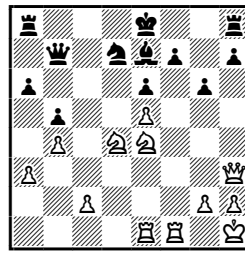


Meo – Giustolisi, Reggio Emilia 1959



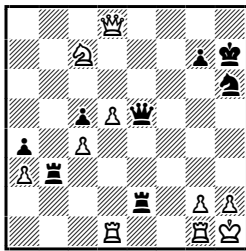
posunięcie czarnych

Bolesławski – Steiner, Saltsjobaden 1948



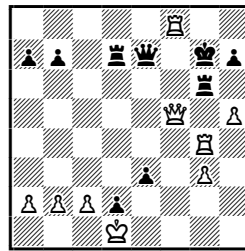
posunięcie białych

Polvin – Krejčík, Wiedeń 1954



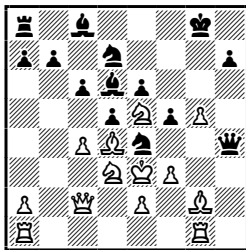
posunięcie czarnych

Awerbach – Zita, Szczawno Zdrój 1950



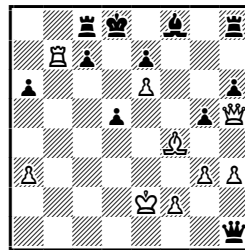
posunięcie białych

Kotow – Bondarewski, Petersburg 1936



posunięcie czarnych

Winz – Videla, Mendoza 1955



posunięcie białych

Meo – Giustolisi 1... ♖e2+ 2. ♜h1 ♚h2+! 3. ♜h2 ♜h4x.

Polvin – Krejčík 1... ♚h2+! 2. ♜h2 ♜g4+ 3. ♜h1 ♜h3+ 4. gh3 ♜h2x.

Kotow – Bondarewski 1... f4+ 2. ♜f4 ♚f2+ 3. ♜d3 ♚d4+! 4. ♜d4 ♜c5+ 5. ♜d3 ♜e5x.

Bolesławski – Steiner 1. ♜f7! (A) 1... ♜f7 2. ♚e6+ ♜f8 3. ♜f1+ ♜e8 4. ♜d6+ ♜d8 5. ♜b7+.  
(B) 1... ♚d5 2. ♜e7+ ♜e7 3. ♚h4+ ♜f7 4. ♜d6+ ♜g7 5. ♚e7+ ♜h6 6. ♜e3.

Awerbach – Zita 1. h6+ ♜h6 2. ♜g6+! hg6 3. ♚h3+ (A) 3... ♜g5 4. ♚h4x.  
(B) 3... ♚h4 4. ♚h4+ ♜g7 5. ♚h8x.

Winz – Videla 1. ♜c7+! ♜c7 2. ♚e8+! ♜e8 3. ♜b8+ ♜c8 4. ♜c8x.