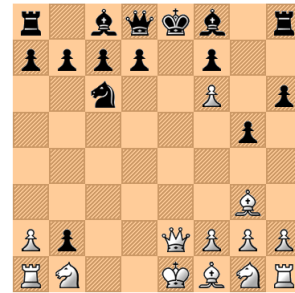


Blake – Hooke, Londyn 1923



1. Hf6+! Kf6 2. Sd5+ Ke5 11. Sf3+ Ke4 12. Sc3x

Rusakow – Werliński, Moskwa 1947



1... He7! 2. fe7 Gg7!

Hartlaub – Worch, Brema 1890



1. Se5! (A) 1... Gd1 2. Gf7+ Ke7 3. Sd5x
(B) 1... Sc3 2. Gf7+ Ke7 3. Hg4.

Prügel – Dyckhoff, Londyn 1899



1... Gb4! 2. Hb4 Sf3+ 3. Sf3 Hf3.

Krogius – Saratowski, Saratow 1945



1. Gf7+! Sf7 2. Se6 (A) 2... Ha5+ 3. Gd2 Hb6 4. a5
Hb2 5. Gc3 (B) 2... Hb6 3. a5 Hb4+ 4. c3 Hc4
5. Sc7+ Kd8 6. b3!

Astapowicz – Gołosow, Nowosybirsk 1967



1. Gf7+! Kf7 2. Hd5+ (A) 2... Kf8 3. Sh6! gh6
4. Gh6x. (B) 2... Kg6 3. Sh4+ Kh5 12. Ge7+.

Bachmann – Kunstmann, Augsburg 1899



1. Gg6! (A) 1... Sd1 2. Gf7+ Ke7 3. Gg5+ Kd6 4.
Sc4+ Kc5 5. Sba3! (B) 1... Hf6 2. He2 Sh1 3. Gf7+
(B1) 3... Ke7 4. Sg4+ (B2) 3... Kd8 11. Sc6+.

Falkbeer – NN, Wiedeń 1847



1. Se5! Gd1 2. Gf7+ Ke7 3. Sd5x.