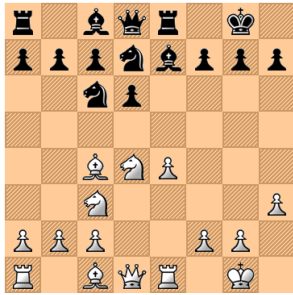
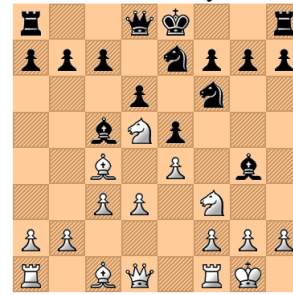


Holzhausen – Tarrasch, Frankfurt 1912



1. Gf7+! Kf7 2. Se6! Ke6 3. Hd5+ Kf6 4. Hf5x.

Pollock – Hull, Nowy Jork 1890



1. Se5! Gd1 2. Sf6+ gf6 3. Gf7+ Kf8 4. Gh6x.

Horwitz – Bledow, Berlin 1827



1... Se4! 2. Ge7 Gf2+ 3. Kf1 Sg3x.

Gerschwiler – Salzmann, Szwajcaria 1965



1. Se6! fe6 2. Hh5+ g6 3. Hg6x.

Rosentreter – Höfer, Berlin 1899



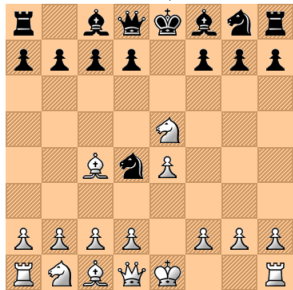
1. f4! gf4 2. Wf4! ef4 3. Hd4 O-O 4. Gf6 He8
5. Gh8

Zukertort – Anderssen, Berlin 1865



1. Sf7! Kf7 2. Gc4+ Ke7 3. Hh5 (A) 3... He8
4. Hg5+! hg5 5. Gg5x (B) 3... Ge8 4. Gg5+ hg5
5. Hg5+ Kd7 6. Hf5+ Ke7 7. He6x.

Muhlock – Kostić, Kolonia 1912



1... Hg5! 2. Sf7 Hg2 (A) 3. Wf1 He4+ 4. Ge2 Sf3x.
(B) 3. d3 Hh1+ 4. Kd2 Hg2 5. Sh8 Hf2+ 6. Kc3
Se2+ (B1) 7. Kd2 Gb4+ (B2) 7. Kb3 Hb6+.

Berger – Fröhlich, Graz 1888



1. Se5! Gd1 2. Sf6+! gf6 3. Gf7x.