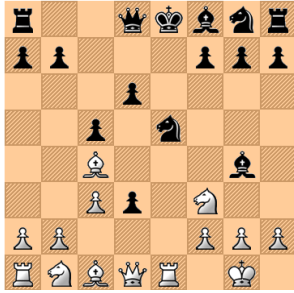
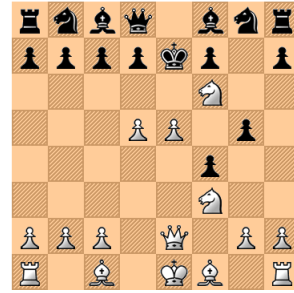


**Potter** – Matthews, Londyn 1868



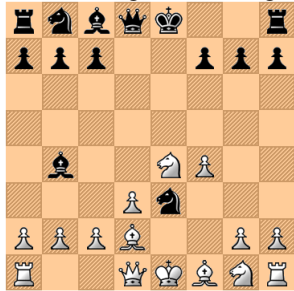
1. Se5! Gd1 2. Gb5+ Ke7 3. Gg5+ f6 4. Sg6+ Kf7  
5. Sh8x.

**Sämisch** – Schlosser, Trautenau 1924



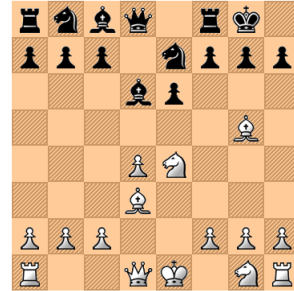
1. d6+ cd6 2. Sd5+! Ke6 3. ed6+ Kd6 4. He5+ Kc6  
5. Sd4+ Kc5 6. b4x.

**Salomon** – Gregor, Hamburg 1902



1. He2! Sc2+ 2. Kd1 Sd4 3. Sf6+ Kf8 4. Gb4+.

**Blom** – Jensen, Odense 1934



1. Sf6+! gf6 2. Gf6 Hd7 3. Gh7+!.

**Ettliger** – Janowski, Nowy Jork 1898



- 1.. Sf3+ 2. gf3 ef3+ 3. Ge2 f2+ 4. Kf1 Gh3x.

**Roedl** – Kramer, Duisburg 1929



1. Wd7! (A) 1... Kd7 2. Sf7 (B) 1... Ga3 2. Wb7  
(C) 1... Sd7 2. Hf7+ Kd8 3. Se6+ Kc8 4. He8x.

**Alechin** – Tenner, Kolonia 1911



1. Se5! Gd1 2. Gf7+ (A) 2... Kf8 3. Gc5+  
(B) 2... Ke7 3. Gc5+ Kf6 4. O-O+ Ke5 5. Wf5x.

**Bolesławski** – Gurgendze, Rostow n.Donem 1960



1. Ga7 Sa7 2. Sd6+! Kd7 3. Sc8+ Kc8 4. He6+