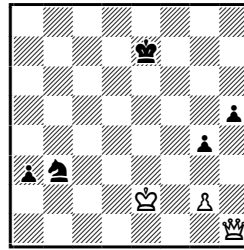




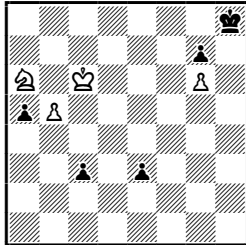
Szaja Kozłowski (1910 – 1943) – szachista i problemista z Łodzi. Zginął w czasie okupacji.

Głos Poranny, 1931 — wygrana



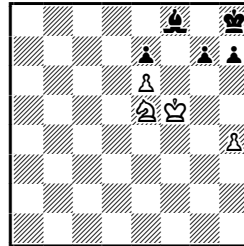
1. ♔e1 a2
2. ♚f1+ ♚d7
3. ♔d1+ ♚~
4. ♔c(e)2+

Głos Poranny, 1931 — wygrana



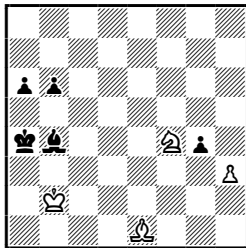
1. ♘b4 ab4
2. b6 c2
3. b7 c1♔+
4. ♚b6 ♔c4
5. b8♔+ ♔g8
6. ♔h2+

Głos Poranny, 1931 — wygrana



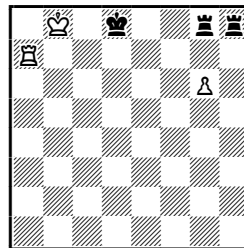
1. ♘g6+
-
- | | |
|---------------|--------------|
| 1... hg6 | 1... ♚g8 |
| 2. ♚g6 ♚g8 | 2. h5 hg6+ |
| 3. h5 ♚h8 | |
| 4. ♚f7 g5 | 5. ♚f8 g4 |
| 6. ♚e7 g3 | 7. ♚f7 g2 |
| 8. e7 g1♔ | 9. e8♔+ ♚h7 |
| 10. ♔e4+ ♚h8 | 11. ♔e5+ ♚h7 |
| 12. ♔f5+ ♚h8 | 13. ♔f6+ ♚h7 |
| 14. ♔g6+ ♔g6+ | 15. hg6+ |

Głos Poranny, 1931 — wygrana



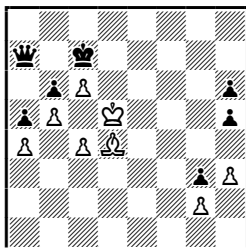
1. ♘b4 gh3
2. ♘e7 h2
3. ♘e2 h1♔
4. ♘c3+ ♚a5
5. ♚b3 b5
6. ♘d8x.

Głos Poranny, 1931 — remis



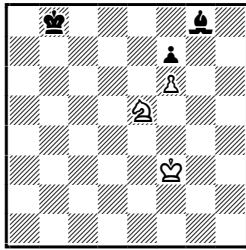
1. ♜c7 ♜e8
2. g7 ♜g8
3. ♜f7 ♜e7
4. ♜f8 ♜e8
5. ♜f7.

Głos Poranny, 1931 — wygrana



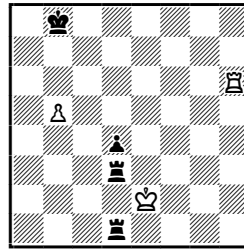
1. ♘b6+ ♔b6
2. c5 ♔b8
3. b6+ ♚c8
4. ♚e4 h4
5. ♚f5 h5
6. ♚e4 ♚d8
7. c7+ ♔c7
8. bc7+ ♚c7
9. ♚d5

Głos Poranny, 1931 — wygrana



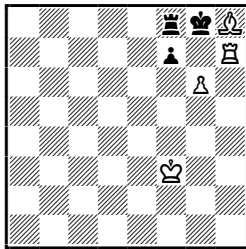
1. ♖d7+ ♜c7 2. ♖f8
- (A) 2... ♜d8
3. ♜f4 ♜e8 4. ♜g5 ♜f8 5. ♜h6.
- (B) 2... ♜d6 3. ♜g4 ♜d5 4. ♜h5 ♜e5
5. ♜g5 ♜e4 6. ♜h6 ♜f5.
- (C) 2... ♜c8 3. ♜f4 ♜d8 4. ♜g5 ♜e8
5. ♜h5 ♜f8 6. ♜h6.

Świat Szachowy, 1932 — remis



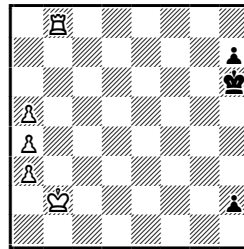
1. ♜b6+ ♜c7
2. ♜c6+.
- 2... ♜b7 2... ♜d7
3. ♜c2 ♜a7 3. ♜c2 ♜d6
4. ♜a2+ ♜b7 4. ♜b6 ♜e5
5. ♜c2 ♜b6 5. ♜b7 ♜b3
6. ♜b2. 6. ♜d1.

Świat Szachowy, 1931 — wygrana



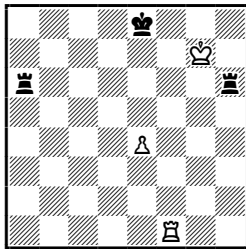
1. ♜g7+ ♜h8 2. ♜h7+ ♜g8
3. ♜g7 (A) 3... ♜h7 4. ♜g8 ♜.
- (B) 3... ♜a8 4. ♜h8+.

Świat Szachowy, 1932 — remis



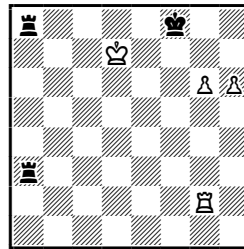
1. ♜b6+ ♜g5 2. ♜b5+ ♜g4
3. ♜b4+ ♜g3 4. ♜b3+ ♜g2
5. ♜a2 ♜h1 ♜ 6. ♜b1.

Świat Szachowy, 1931 — remis



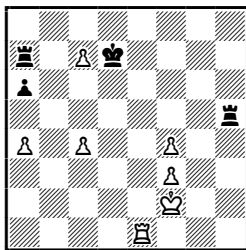
1. ♜f8+ ♜d7 2. ♜f7+ ♜e6 3. ♜f5.

Głos Poranny, 1932 — remis



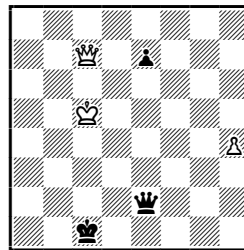
1. ♜g7+ ♜g8 2. ♜h7+ ♜h7
3. ♜g8 ♜+ ♜g8 4. ♜h2+.

Świat Szachowy, 1932 — remis



1. ♜e7+ ♜c8 2. ♜e8+ ♜c7
3. ♜e7+ ♜b6 4. ♜c5+ ♜c5
5. ♜a5+ ♜a5 6. ♜e6+ ♜c5
7. ♜e5+ ♜b4 8. ♜e4+

Świat Szachowy, 1933 — wygrana



1. ♜f4+ ♜d1 2. ♜c4! ♜h2
3. ♜a4+ ♜e1 4. ♜a1+ ♜f2
5. ♜b2+ ♜g3 6. ♜h2+.