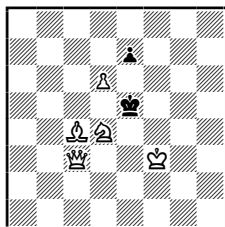


Trzychodówki

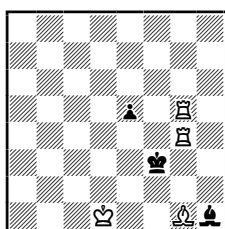
– miniatury

z lat 1901 – 1902

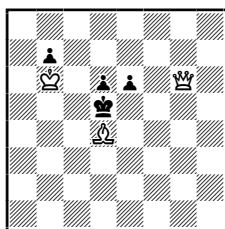
Zadanie 1



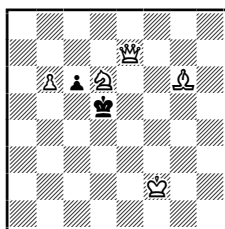
Zadanie 2



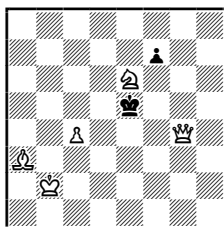
Zadanie 3



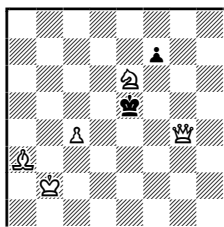
Zadanie 4



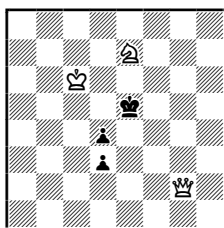
Zadanie 5



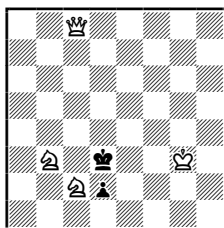
Zadanie 6



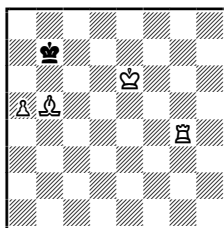
Zadanie 7



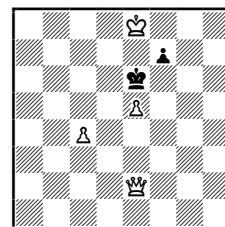
Zadanie 8



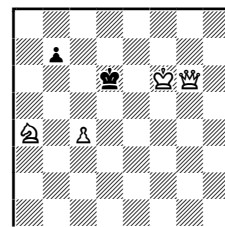
Zadanie 9



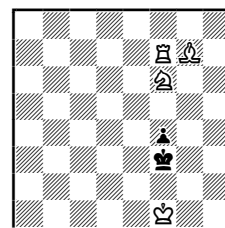
Zadanie 10



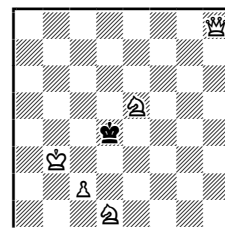
Zadanie 11



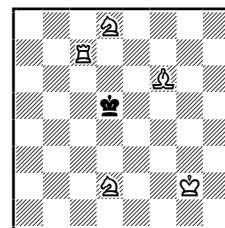
Zadanie 12



Zadanie 13



Zadanie 14



- 1 – George Carpenter, 1901
- 2 – William Shinkman, 1901
- 3 – Adolf Bayersdorfer, 1902
- 4 – Adolf Bayersdorfer, 1902
- 5 – Godfrey Heathcote, 1902
- 6 – Godfrey Heathcote, 1902
- 7 – William Shinkman, 1902
- 8 – William Shinkman, 1902
- 9 – William Shinkman, 1902
- 10 – William Shinkman, 1902
- 11 – William Shinkman, 1902
- 12 – William Shinkman, 1902
- 13 – Otto Wurzburg, 1902
- 14 – Otto Wurzburg, 1902

- 1. Hc1! Kd4 2. Gb3; 1... Kd6 2. Ge6; 1... Kf6 2. Hh6+.
- 1. Wh4! e4 2. Wh3+; 1... Gg2 2. Wf5+.
- 1. Ga1! e5 2. Hg4; 1... Kc4 2. Hb1.
- 1. Sb5! cb5 2. Gf7+; 1... Kc4 2. Gd3+.
- 1. Kc2! Kf6 2. Sf8; 1... f5 2. Hg5;
1... f6 2. Ge7; 1... fe6 2. Hf3.
- 1. Kc2! fe6 2. Hf3; 1... f6 2. Ge7;
1... f5 2. Hg5; 1... Kf6 2. Ke5.
- 1. Kd7! d2 2. Hf3; 1... Kf4 2. Ke6; 1... Kf6 2. Hg6+.
- 1. Sa5! Ke2 2. Hg4+; 1... Ke4 2. He6+; 1... d1~ 2. Hc4+.
- 1. Wg8! Ka7 2. Gc6; 1... Kc7 2. Ga6.
- 1. Hh5! f6 2. Kd8; 1... f5 2. Hh8.
- 1. Hh7! b6 2. Hb7; 1... b5 2. cb5.
- 1. Gf8! Ke3 2. Wd7; 1... Kg3 2. Wh7.
- 1. Sc3! Kc5 2. Sc4; 1... Ke3 2. Sd3.
- 1. Wb7! Kc5 2. Ge5; 1... Kd6 2. Gd4.