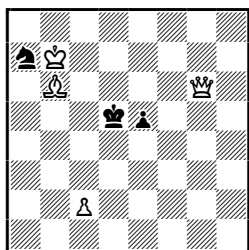
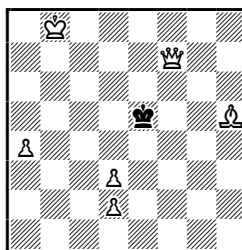


William Braithwaite
Toronto Sport, 1888



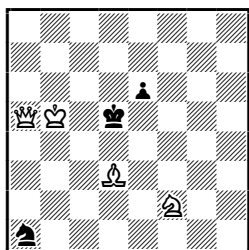
1. ♔f6 (A) 1... e4 2. ♕f5+
 (B) 1... ♖c4 2. ♕f3
 (C) 1... ♖e4 2. ♖a7

Edith Baird
Cape Times, 1894



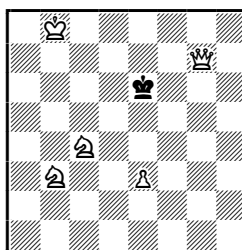
1. ♖d1 (A) 1... ♔d4 2. ♕h5
 (B) 1... ♖d6 2. d4

Godfrey Heathcote
English Mechanic, 1890



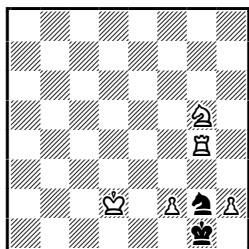
1. ♖h7 (A) 1... ♔d4 2. ♕d2+
 (B) 1... ♖e5 2. ♕c7+
 (C) 1... e5 2. ♖g8+
 (D) 1... ~ 2. ♕d8+

Edith Baird
The Field, 1894



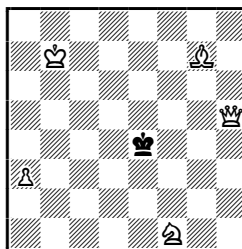
1. ♕f8 (A) 1... ♔d5 2. ♕f7+
 (B) 1... ♔d7 2. e4

Samuel Loyd
New York Tribune, 1891



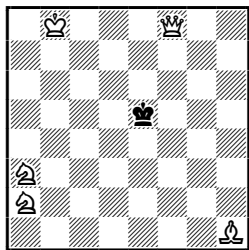
1. ♖g3 (A) 1... ♖f~ 2. ♖h3(+)
 (B) 1... ♖h~ 2. ♖f3(+)

Edith Baird
Illustrated London News, 1896



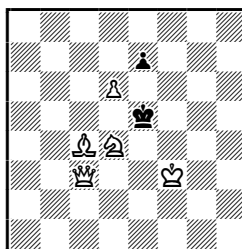
1. ♕h3 (A) 1... ♔d5 2. ♕f5+
 (B) 1... ♔f4 2. ♖h2

Edith Baird
Leeds Mercury Weekly Supplement, 1894



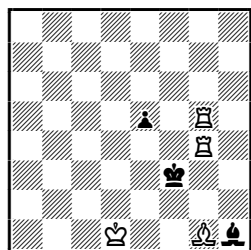
1. ♖c1 (A) 1... ♔d4 2. ♕f6+
 (B) 1... ♖e6 2. ♖d3

George Carpenter
Checkmate, 1901



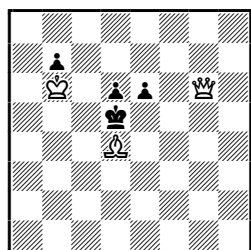
1. ♕c1 (A) 1... ♔d4 2. ♖b3
 (B) 1... ♖d6 2. ♖e6
 (C) 1... ♔f6 2. ♕h6+

William Anthony Shinkman
Checkmate, 1901



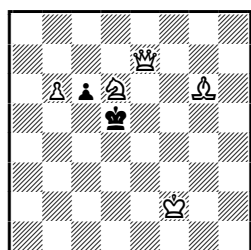
1. ♖h4 (A) 1... e4 2. ♖h3+
 (B) 1... ♗g2 2. ♖f5+

Adolf Bayersdorfer
Schachminiaturen, 1902



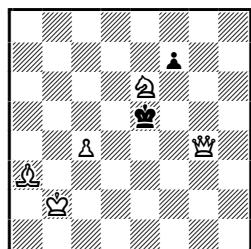
1. ♗a1 (A) 1... e5 2. ♖g4
 (B) 1... ♖c4 2. ♖b1

Adolf Bayersdorfer
Schachminiaturen, 1902



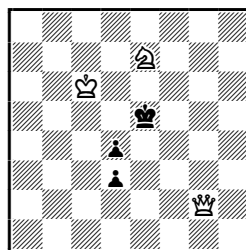
1. ♗b5 (A) 1... cb5 2. ♗f7+
 (B) 1... ♖c4 2. ♗d3+

Godfrey Heathcote
Illustrated London News, 1902



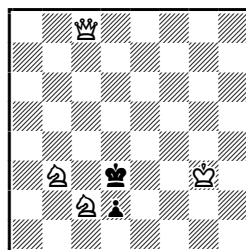
1. ♖c2 (A) 1... f5 2. ♖g5
 (B) 1... f6 2. ♗e7
 (C) 1... fe6 2. ♖f3
 (D) 1... ♖f6 2. ♗f8

William Anthony Shinkman
Schachminiaturen, 1902



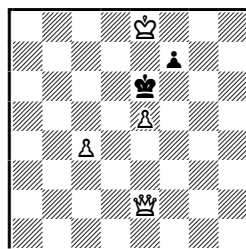
1. ♖d7 (A) 1... ♖f4 2. ♖e6
 (B) 1... ♖f6 2. ♖g6+
 (C) 1... d2 2. ♖f3

William Anthony Shinkman
Schachminiaturen, 1902



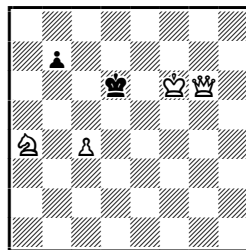
1. ♗a5 (A) 1... ♖e2 2. ♖g4+
 (B) 1... ♖e4 2. ♖e6+
 (C) 1... d1~ 2. ♖c4+

William Anthony Shinkman
Schachminiaturen, 1902



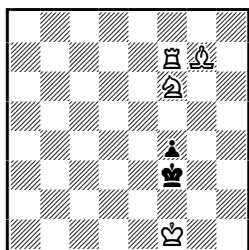
1. ♖h5 (A) 1... f5 2. ♖h8
 (B) 1... f6 2. ♗d8

William Anthony Shinkman
Schachminiaturen, 1902



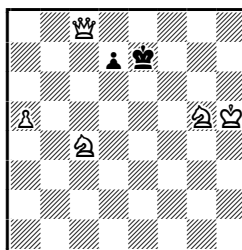
1. ♖h7 (A) 1... ♖c6 2. ♖e6
 (B) 1... b5 2. cb5
 (C) 1... b6 2. ♖b7

William Anthony Shinkman
Schachminiaturen, 1902



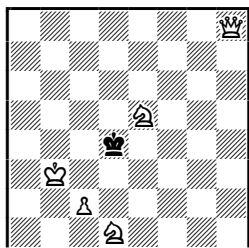
1. ♘f8 (A) 1... ♔e3 2. ♖d7
(B) 1... ♘g3 2. ♖h7

George Carpenter
Checkmate, 1903



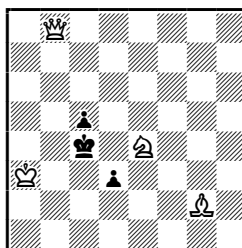
1. ♘e3 (A) 1... ♔d6 2. ♚b8+
(B) 1... ♘f6 2. ♚h8+
(C) 1... d5 2. ♘f5+

Otto Wurzburg
Schachminiaturen, 1902



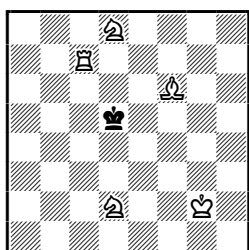
1. ♘c3 (A) 1... ♔c5 2. ♘c4
(B) 1... ♘e3 2. ♘d3

Jan Dobruský
Schachminiaturen, 1903



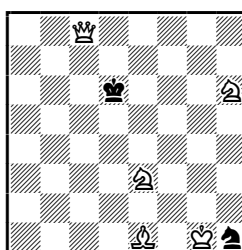
1. ♚b2 (A) 1... d2 2. ♘c5
(B) 1... ♘d5 2. ♚f6

Otto Wurzburg
Schachminiaturen, 1902



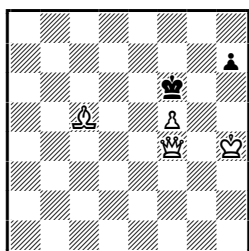
1. ♖b7 (A) 1... ♔c5 2. ♘e5
(B) 1... ♘d6 2. ♘d4

Miroslav Havel
Zlata Praha, 1903



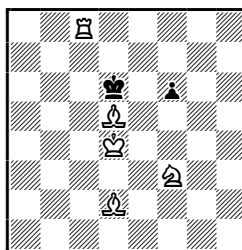
1. ♘g2 (A) 1... ♔e5 2. ♘hg4+
(B) 1... ♘e7 2. ♘h4+
(C) 1... ♘f2 2. ♘c3
(D) 1... ♘g3 2. ♘g3+

Otto Wurzburg
Schachminiaturen, 1902



1. ♘d6 (A) 1... ♔f7 2. ♚g5
(B) 1... ♘g7 2. ♚h6+
(C) 1... h5 2. ♚g5+
(D) 1... h6 2. ♚g4

William Anthony Shinkman
Schachminiaturen Neue Folge, 1903



1. ♘g5 (A) 1... ♔g5 2. ♖d8+
(B) 1... ♔d7 2. ♘e6+
(C) 1... ~ 2. ♘b4+